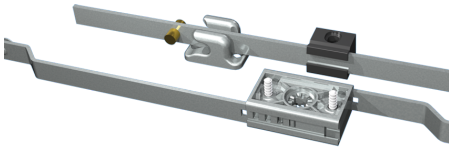


VISION OUTSIDE CLASSIC



The system is mounted outside the sealing area. When the swing handle is turned to close, the upper flat rod is moving upwards and the lower rod downwards. The rod is customized with the latching points A1/A2 and B1/B2 specified according to your application.

Latch points (frame part) and rod guides ordered separately.



MATERIAL

Control mechanism: Zinc die cast, zinc plated, special surface treatment (passes 30 day salt-spray test according to ISO 9227, equivalent to ASTM B 117) or glass fibre reinforced polyamide (PA6GF30)

Rod: Steel, zinc plated or stainless steel 304

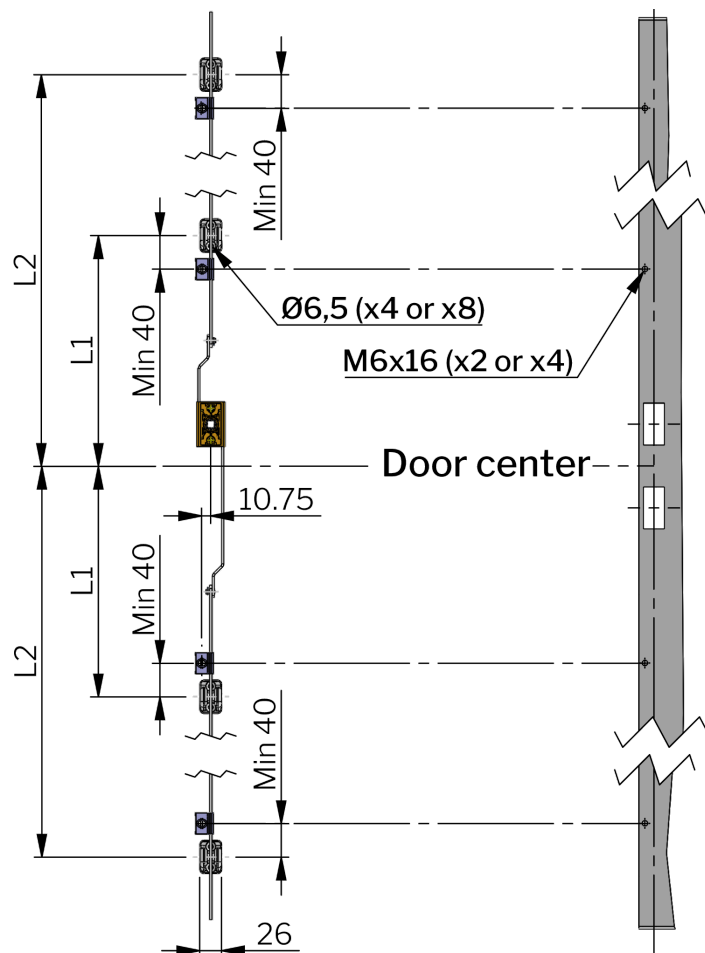
RELATED PRODUCTS

Handles: 1-002.02, 1-005.10, 1-006.50, 1-002.01, 6-010, 1-002.03, 1-006.01, 1-006.03, 1-007, 1-002.08

Needed components for a complete system:

1-008.57, 1-008.25

Use the Index Code at industrilas.com



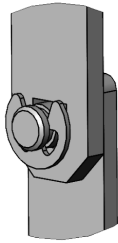
Industrilas
— When access counts —

Make your selections in each column to create your article number (AAAA-BBBB-CCCC)

| AAAA | Material rod | Material control mechanism | BBBB | Rod system | CCCC | L in mm | L1 in mm | L2 in mm |
|------|--------------------|----------------------------|------|----------------------------------|------|---------|----------|----------|
| 1321 | Steel, zinc plated | Zinc, zinc plated | 2000 | Vision Outside Classic E-clip | 0900 | 700 | 300 | - |
| 1390 | SS 316 | Zinc, Delta seal | 3000 | Vision Outside Classic Quick Fit | 1200 | 1500 | 400 | - |
| 1350 | Steel, zinc plated | PA6GF30 | | | 982 | 982 | 300 | 700 |
| 1395 | SS 316 | PA6GF30 | | | 1700 | 1700 | 300 | 800 |
| | | | | | | | | |



E-clip



Quick-fit

